

# SIEMENS

*Ingenuity for life*

Marine

## DNV GL

Global maritime advisory group uses Simcenter STAR-CCM+ to increase hull efficiency by 36 percent without sacrificing capacity

### Product

Simcenter

### Business challenges

Optimize hydrodynamic hull performance for new fleet of container vessels

Achieve a 30 percent improvement in energy efficiency

### Keys to success

Use Simcenter STAR-CCM+ to analyze and optimize hull for a range of operating conditions

Establish full collaboration with the ship owner, shipyard and advisory group

### Results

Achieved 36 percent improvement in energy efficiency without sacrificing container capacity

Estimated annual fuel savings of \$3 million per ship

Enhanced market position of participating companies based on positive results

**Siemens Digital Industries Software solution helps DNV GL optimize hull efficiency and predict annual fuel savings of \$3 million per ship**

### Collaborating on a common goal

DNV GL (formerly DNV) is a key global player in the marine industry, providing expert services through its maritime advisory group. In addition to consulting services, DNV GL performs hydrodynamic hull optimization projects in cooperation with major ship owners, world-leading shipyards and design offices.

When APL, a global container transportation company, ordered 10 new container vessels that were designed to carry 13,800 twenty-foot equivalent units (TEUs are a unit of cargo capacity) from the world's largest shipbuilding company, Hyundai Heavy Industries (HHI), it engaged DNV GL to collaborate with HHI to ensure the maximum hull efficiency of the vessels.

### Optimizing vessel hydrodynamic performance

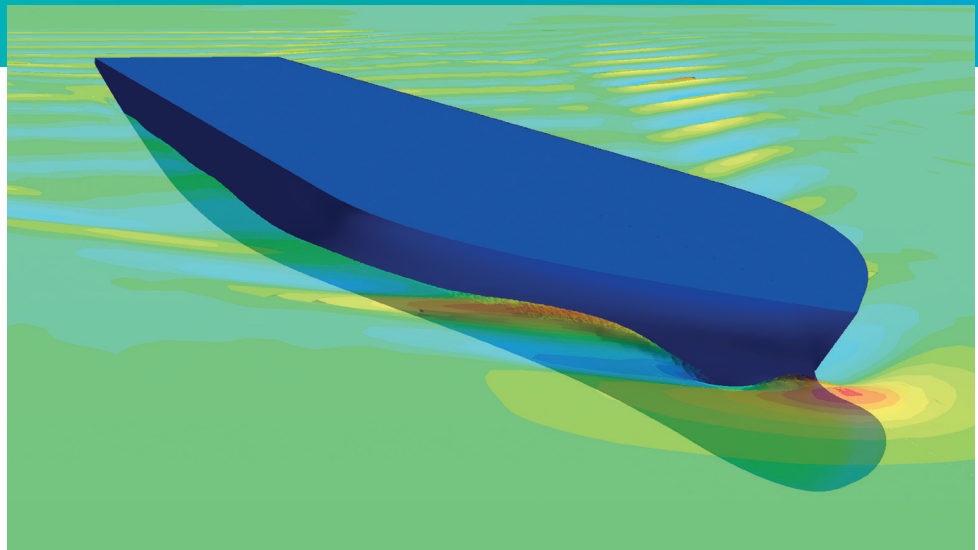
Optimizing ships used to take a design-perspective approach that focused on best performance at design draft/speed;



however, ships seldom sail in that condition. As a result, APL requested a different type of optimization, targeting various speed and draft combinations as described in the operating profile.

“Using Simcenter STAR-CCM+, we can make as many modifications and adjustments as necessary and immediately see how these decisions will affect other areas of the design.”

Olav Rognebakke  
Head of Ship Hydrodynamics  
and Stability  
DNV GL



Visualization of the simulation results for a draft/speed condition of 13 m/19 knots (image courtesy of DNV).

APL Director Shaj U. Thayil, who was in contact with DNV GL and knew about its innovative, energy-efficient container ship concept called Quantum, says, “Our inspiration was derived from Quantum. Together with DNV GL and Hyundai, we focused on the vessels and their intended use, and analyzed the traffic and operational patterns specific to usage needs. We set up nine focus criteria with a goal of achieving an overall 30-percent improvement in energy efficiency.”

The overall hydrodynamic performance of a vessel is directly connected to its resistance and propulsive efficiency. The resistance is influenced by the hull shape, the wetted surface area and the configuration of appendages. Propulsive efficiency is influenced by the characteristics of propellers in open water and the interaction between the hull and propellers. Performance depends on the variation of operating conditions, such as vessel speed, draft and trim.



Comparison between the CFD analysis and model tests (image courtesy of DNV).

Vessels have traditionally been optimized for a single condition, normally the contract speed at design draft. With the help of state-of-the-art computational fluid dynamics (CFD) tools and high-speed computers, it is now possible to optimize a vessel for multiple conditions in which the vessel will be operating.

DNV GL has worked on hull optimization for several years, providing ship owners, shipyards and designers with valuable advice during the design process. DNV GL experts have extensive experience in ship hydrodynamics and energy efficiency, and have worked on numerous vessel types and sizes, including the major commercial segments of the tanker, bulk carrier and container vessel markets.

### A typical optimization process

A typical project for hydrodynamic hull optimization can include many steps, the first of which is making sure to establish a collaborative relationship among all participants (including DNV GL, the ship owner and the shipyard). After defining a realistic operating profile, participants discuss design ideas, combining DNV GL's ideas with the shipyard's design philosophy so they can obtain an optimal initial hull design from both a hydrodynamic and building perspective.

Based on the operating profile, DNV GL then works on optimizing the hull forebody and hull aft body to improve propulsive efficiency, including propeller and machinery configuration considerations. The optimization process also includes an assessment of the Energy Efficient Design Index (EEDI). Finally, DNV GL helps prepare for, and attends the towing tank model testing.

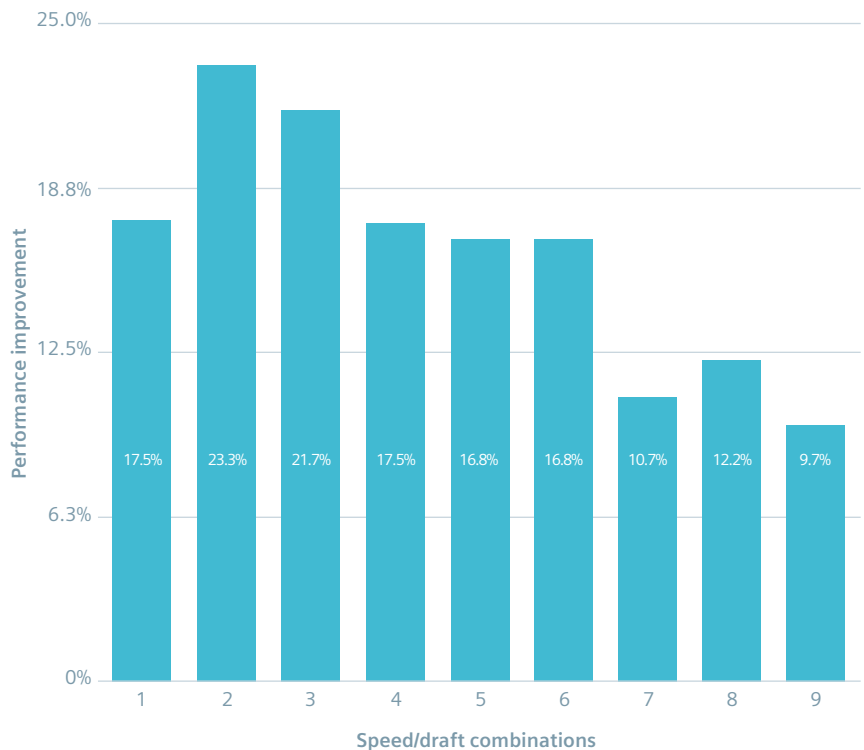
The optimization process delivers value to the ship owner and shipyard by increasing confidence in the hydrodynamic performance of the hull. Typically, significant improvements in fuel efficiency and reduced gas emissions will also be realized throughout the vessel's lifespan as a result of a successful optimization process.

### Project scope of work

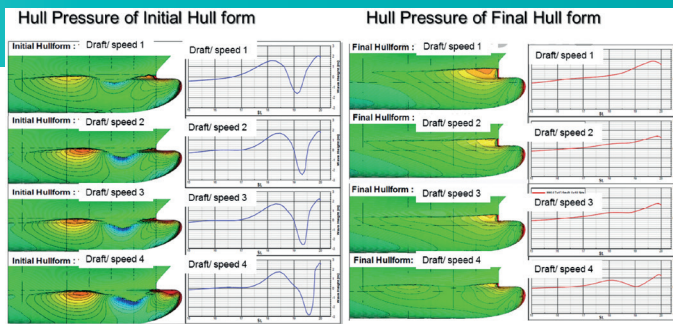
The specific scope of work for the 10 new TEU container vessels included a series of steps. The first work item involved establishing a weighting matrix for the vessel's relevant operating profile. Then based on the operating profile, the hull forebody and aft body were optimized, including shoulders, bulb and transom stern height. Additional steps included analyzing the wake and propulsion efficiency; predicting the speed using power and fuel oil consumption curves; assessing preliminary EEDI and attending towing tank model tests.

"CFD is like a virtual towing tank."

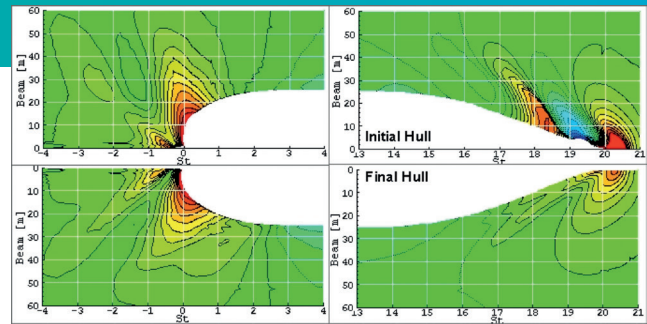
Tor Svensen  
President  
DNV GL



Hull performance improvements for different drafts/speed conditions (image courtesy of DNV).



Distribution of hull pressure in the initial and final hull forms (image courtesy of DNV GL).



Visualization of calculated wave pattern (image courtesy of DNV GL).

### Managing the simulation process

All resistance simulations and wake assessments were performed using Simcenter STAR-CCM+™ software from product lifecycle management (PLM) specialist Siemens Digital Industries Software. Simcenter STAR-CCM+ is part of the Simcenter™ portfolio, a comprehensive suite of simulation and test solutions for predictive engineering analytics. DNV GL runs fully viscous and potential-flow CFD simulations at full scale on a computational cluster with more than 600 central processing units (CPUs).

According to Olav Rognebakke, head of ship hydrodynamics and stability at DNV, the availability of powerful CFD tools such as Simcenter STAR-CCM+ combined with the expertise of highly qualified staff made it possible to enhance an already good Hyundai vessel design. “The optimization process is based on heavy CFD calculations,” says Rognebakke. “In the past, DNV GL could not have performed such heavy computations so quickly and at such an affordable price. Using Simcenter STAR-CCM+, we can make as many modifications and adjustments as necessary and immediately see how these will affect other areas of the design.”

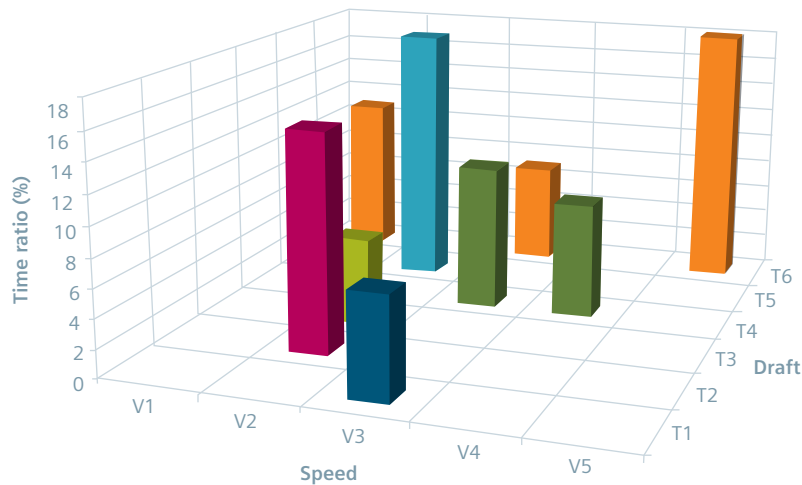
“CFD is like a virtual towing tank,” says Tor Svensen, president of DNV GL, agreeing on the importance of the role Simcenter STAR-CCM+ plays in hull optimization.

Once the design of the new hulls was completed, Hyundai tested them in its towing tank. “The virtual towing tank does not replace testing in the ship model basin, but it means that we can get much better testing models,” comments Rognebakke.

### Assessment results and conclusions

The hull was optimized for five different design points with varying speed-draft combinations. The aft part was optimized for maximum propeller efficiency. The bulb was lowered in order to be efficient at lower drafts as well. Although this solution may result in a marginal penalty at the original design condition, the aim was to optimize the hull for a range of operating conditions. Instead of a design speed of 25 knots, the new vessels were optimized for a lower top speed of 23 knots, following the trend in recent years toward slow steaming.

“The hull was optimized for the ship’s normal operating speed range, which is between 15 and 19.5 knots,” says Svensen.



Example of an operating profile (image courtesy of DNV).

The goal was to achieve a 30-percent overall improvement in energy efficiency. The optimization process exceeded that, yielding a 36-percent overall improvement. “As a result of the CFD optimization process, the ships can carry as many containers as before and are 36-percent more energy efficient,” comments Thayil. “In addition to saving fuel costs, it is a positive environmental message.”

By working collaboratively and keeping a continuous dialogue with APL and HHI, DNV GL was able to incorporate a combination of best ideas and results into the final hull design. It was estimated the optimized hull would result in annual fuel savings of approximately \$3 million per ship, which would amount to yearly savings of \$30 million for the fleet. This anticipated achievement provided positive industry attention and helped to improve the market position for both APL and Hyundai Heavy Industries.

***“As a result of the CFD optimization process, the ships can carry as many containers as before and are 36 percent more energy efficient.”***

Shaj U. Thayil  
Director  
APL

## Solution

Simcenter STAR-CCM+  
siemens.com/simcenter

## Customer's primary business

DNV GL is an international certification body and classification society, and its main expertise is in advising on technical assessments and risk management. DNV GL helps manage risk and vessel availability in both shipping and offshore sectors. DNV GL has 15,000 professionals working in more than 100 countries. [dnvgl.com](http://dnvgl.com)

## Customer location

Oslo  
Norway

In addition, the cost of DNV GL services to perform this optimization was negligible compared with the savings achieved through improved fuel efficiency. DNV GL, which is an independent foundation, has entrusted all commercial rights to Hyundai Heavy Industries.

## Acknowledgements

We would like to acknowledge Tore Stensvold and Teknisk Ukeblad for letting us use the testimonials from their article, "Digital Test Tank At DNV– Saves 30 million USD per year with new hull," published online on September 5, 2012.



New hull design (image courtesy of DNV).

*“In the past, DNV GL could not have performed such heavy computations so quickly and at such an affordable price.”*

Olav Rognebakke  
Head of Ship Hydrodynamics and Stability  
DNV GL

## Siemens Digital Industries Software

Americas +1 314 264 8499  
Europe +44 (0) 1276 413200  
Asia-Pacific +852 2230 3333

© 2018 Siemens. A list of relevant Siemens trademarks can be found [here](#). Other trademarks belong to their respective owners.  
59994-C5 3/18 M

[siemens.com/software](http://siemens.com/software)